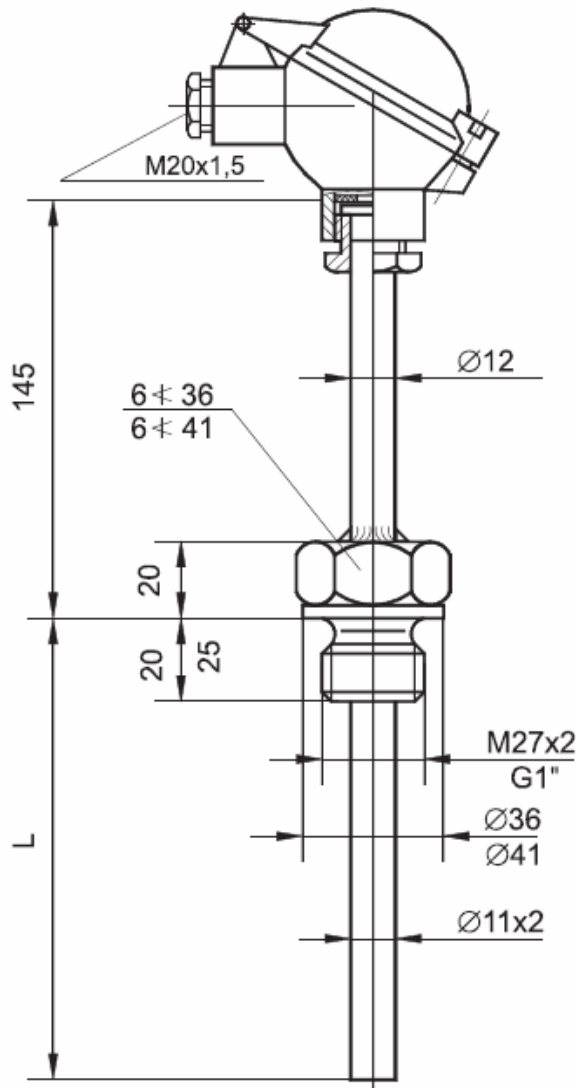


## TEMPERATURE SENSOR TYPE CT G1



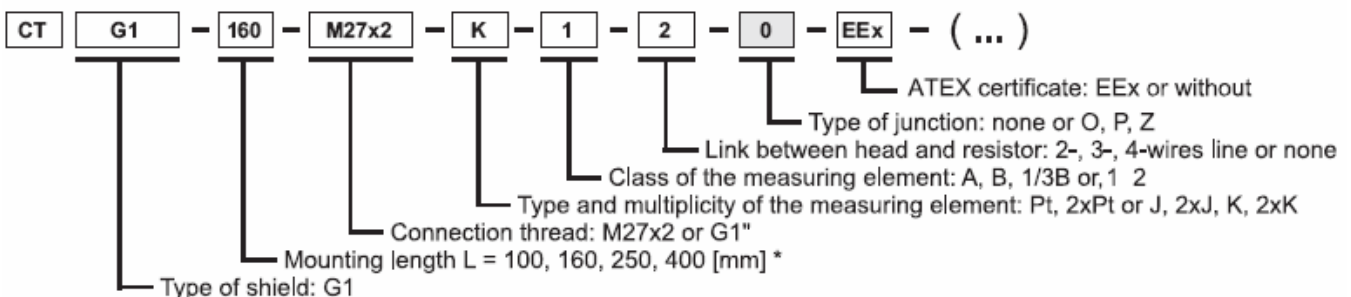
### TECHNICAL DATA:

- Measuring range:  
Pt: -200 ... 550 [°C]  
J/K: -200 ... 550 [°C]
- Admissible load:  
see **Graph 3**
- Material of wetted parts:  
304ss or 316Lss
- Standard immersion length L:  
100, 160, 250, 400 [mm] (\*)
- Process connection:  
M27x2
- Time constant:

Pt	T <sub>0.5</sub> [s]	T <sub>0.9</sub> [s]
	≤ 40	≤ 120

- Diameter of the measuring insert:  
Ø= 6 [mm]
- Minimal immersion depth:  
Pt: 80 [mm]  
J/K: 70 [mm]
- Admissible vibrations at mounting site:  
5 ... 80 [Hz] (do 5 [g])

### EXAMPLE OF ORDER:



### ADDITIONAL INFORMATION:

- \* Non-standard length of temperature sensors on demand.
- Type of exchangeable insert: W1, W3.
- To specify temperature sensor with the head - mounted transmitter please add code of transmitter at the end of ordering code of sensor (see chapter X) e.g.

CT G1 - 160 - M27x2 - K - 1 - 2 - 0 - EEx - (X/100 + 500)