

SOLID FRONT**AU**

SPECIAL FEATURES

- STAINLESS STEEL CASE & MEASURING SYSTEM
- SOLID FRONT DESIGN FEATURES BAFFLE WALL INTERPOSED BETWEEN THE SENSING SYSTEM & THE WINDOW, AND PRESSURE RELIEVING BACK FOR INCREASED SAFETY
- SOCKET & CASE WELDED
- DRY OR LIQUID FILLED
- STAINLESS STEEL BLOW OFF BACK
- STANDARD FOLLOWED IN GENERAL EN 837-1



APPLICATIONS

ESPECIALLY SUITED FOR OCCASIONAL SHORT DURATION OVER PRESSURES OF UPTO 4 TIMES SCALE RANGE. (EXACT VALUES SEE TABLE) SUITABLE FOR CORROSIVE ENVIRONMENTS & GASEOUS OR LIQUID MEDIA THAT WILL NOT OBSTRUCT THE PRESSURE SYSTEM.

SPECIFICATIONS

STANDARD VERSION : 100mm

Accuracy	: ±1.0% FOR RANGE SCALE & 3% FOR END SCALE (END SCALE IS COVERED WITH TRIANGLE)
Ambient temperature:	- 20°C to + 65°C
Process temperature:	Max. 300°C
Operating pressure	: 75% of the Scale Value
Over pressure limit	: Refer Table

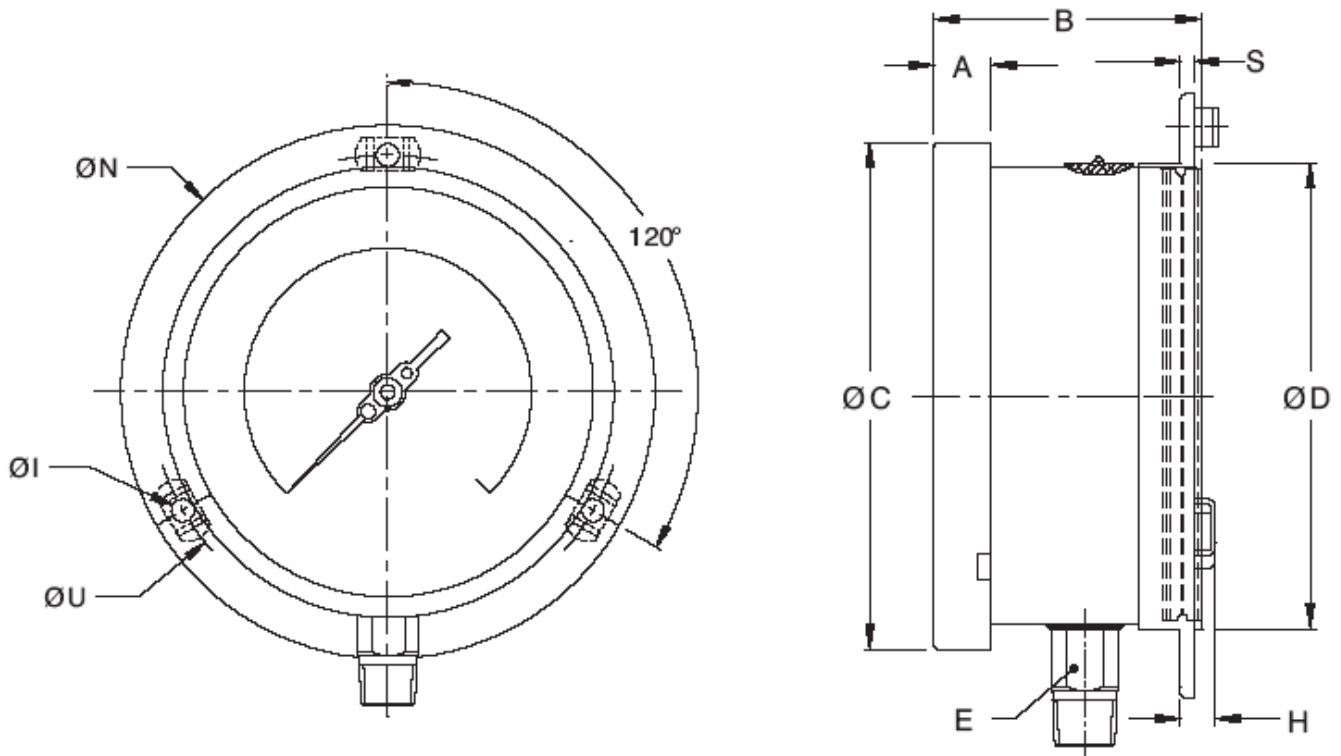
Case	: AISI 304 SS
Ring	: AISI 304 SS, Bayonet Lock
Bourdon	: AISI 316L SS
Socket	: AISI 316L SS
Movement	: AISI 304 SS
Joints	: Tig Argon Arc Welding

Protection	: IP 65
Dial	: Aluminium, black graduation on white background : (The scale end is marked by a black triangle)
Pointer	: Aluminium, black Coloured Micrometer Zero Adjustable
Window	: Shatterproof/Safety Glass
Blow off Disc	: AISI 304 SS
Gasket	: Neoprene

GLYCERINE FILLED VERSION (OPTION PY)

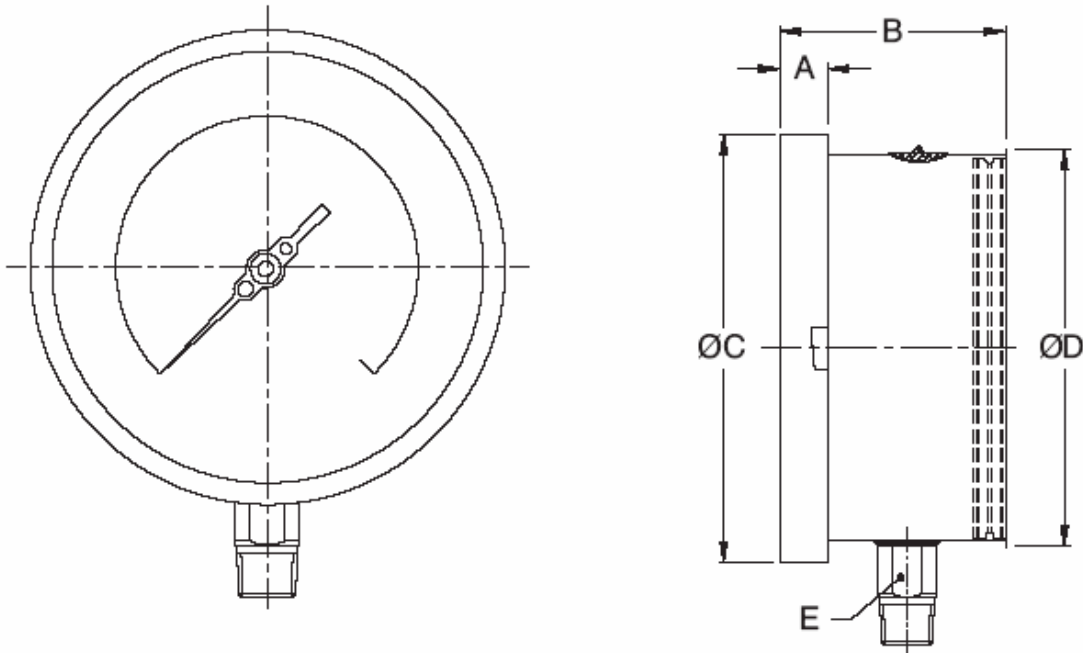
Accuracy	: ± 1.0% FOR RANGE SCALE & 3% FOR END SCALE
Ambient Temperature	: Maximum 65°C
Protection	: IP 65
Window	: Shatterproof/Safety Glass
Dampening Liquids	: Glycerine 98% (Others available as Option)
Other Features	: Refer Specification of Standard Version

TYPE 1



NS	A	B	ØC	ØD	E	ØN	ØU	H	ØI	S	Weight in gram (With Box)
100	12.5	64	100	110	22	134	118	15	6	1	815.0

TYPE 2



NS	A	B	ØC	ØD	E	Weight in gram (With Box)
100	12.5	64	100	110	22	720.0

Notes : • Drawings are not to scale. • All Dimensions are in mm. • NS = Nominal Size

RANGE TABLE

Note : Manufacturer offers National / International Scales like kPa, Mpa, bar, psi, kg/cm² & Dual Scale like kPa with psi, kPa with bar, bar with psi or Equivalent scales as per the requirement can be provided on request.

Following are the example tables for kg/cm² & psi scales

SCALE & OVERLOAD RANGES

SINGLE SCALE (kg/cm ² or bar)			
RANGE	OVERLOAD RANGE	RANGE	OVERLOAD RANGE
0/0.6	2.5	0/6	25
0/1	4	0/10	40
0/1.6	6	0/16	60
0/2.5	10	0/25	80
0/4	16	0/40	100

HOW TO ORDER

BASIC MODEL

CODE F
NOMINAL SIZE 100mm

TYPE OF MOUNTING

- 1 WALL/ SURFACE / PROJECTION MOUNTING WITH BOTTOM ENTRY
- 2 DIRECT BOTTOM ENTRY

GAUGE CONNECTION

3BM	3/8" BSP (M) STANDARD	3NM	3/8" NPT (M)
4BM	1/2" BSP (M) STANDARD	4NM	1/2" NPT (M) STANDARD
2NM	1/4" NPT (M)	2TM	1/4" BSPT (M)
4TM	1/2" BSPT (M)	3TM	3/8" BSPT (M)

Note : Connections like PT/PF/Flaired /UNF/G/R etc.can be provided on request.
Non standard connections can be provided through adaptors.

RANGE

REFER TABLES

OPTIONS

FOR NON STANDARD PRODUCTS/OPTIONAL ITEMS, PLEASE CONTACT FACTORY FOR DELIVERY AND MINIMUM QUANTITY OF ORDER.

TI	MONEL BOURDON & SOCKET (MONEL VERSION)	TB	HELIUM LEAK TEST
PS	ASI 316 SS CASE & BEZEL	TF	TESTED TO NACE STANDARDS
PW	FIVE POINT CALIBRATION CERTIFICATE	QB	DAMPENING SCREW IN ASI 316 SS
RH	CUSTOM DESIGNED DIAL	SF	MOVEMENT WITH DAMPENING JELLY
RZ	TOUGHENED GLASS	SX	SS TAG PLATE
SG	OXYGEN SERVICES (WITHOUT OPTION DAMPENING LIQUID)	PY	DAMPENING LIQUID GLYCERINE FILLED
SW	DIAL TAG MARKING	FG	FILLABLE LIQUID GLYCERINE

Ordering Example:

AU - F - 2 - 4NM - 0/10kg/cm² - RH

Note : ● Due to continuous improvement, the specification may vary from time to time.

AU

F

2

4NM

0-10
kg/cm²

RH