

## BOURDON TYPE



### SPECIAL FEATURES

- STAINLESS STEEL CASE & MEASURING SYSTEM
- DRY OR LIQUID FILLED
- ACCURACY UPTO  $\pm 1.6\%$

### APPLICATIONS

FOOD & BEVERAGE, PHARMACEUTICAL, CRYOGENICS, CONVENTIONAL, PUMPS, HYDRO-CLEANING MACHINES, PRESSES, ENGINE COMPRESSORS, TURBINES, DIESEL ENGINES & REFRIGERATING PLANTS.



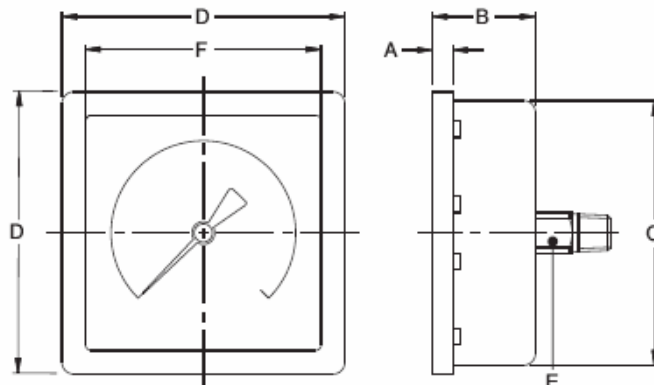
### SPECIFICATIONS

#### STANDARD VERSION : 100mm

Accuracy	: $\pm 1.6\%$ of F.S.
Ambient temperature	: - 20°C to + 65°C
Process temperature	: Max 270°C
Operating pressure	: 75% of the Scale Value
Over pressure limit	: 30 % for Pressure Ranges upto 400kg/cm <sup>2</sup>

Case	: AISI 304 SS
Ring	: AISI 304 SS, (Crimped Type)
Socket	: AISI 316 SS
Bourdon	: AISI 316 SS
Movement	: AISI 304 SS
Joints	: Tig Argon Arc Welding
Enclosure Protection	: IP 55

Dial	: Aluminium, black graduation on white background
Pointer	: Aluminium, black Coloured, Fixed
Window	: Sheet Glass
Gasket	: Silicon rubber
Filling Plug	: Neoprene



TYPE 4

A	B	C	D	E	F	Weight in gram (With Box)
5	30	90	96	14	80	330.0

## RANGE TABLE

Note : Manufacturer offers Pressure ranges, Vacuum ranges and Compound ranges in Scales like kPa, MPa, bar, psi, kg/cm<sup>2</sup> & Dual Scale like kPa with psi, kPa with bar, bar with psi or scales as per the requirement can be provided on request.

Following are the example tables for kg/cm<sup>2</sup> & psi scales

## PRESSURE RANGE

RANGE (PSI with kg/cm <sup>2</sup> )			
RANGE PSI	RANGE kg/cm <sup>2</sup>	RANGE PSI	RANGE kg/cm <sup>2</sup>
-30 inHg / 0	-760 mmHg / 0	0/3000 psi	0/210 kg/cm <sup>2</sup>
0/15 psi	0/1 kg/cm <sup>2</sup>	0/4000 psi	0/280 kg/cm <sup>2</sup>
0/30psi	0/2 kg/cm <sup>2</sup>	0/5000 psi	0/350 kg/cm <sup>2</sup>
0/60 psi	0/4 kg/cm <sup>2</sup>	0/6000 psi	0/400 kg/cm <sup>2</sup>
0/100 psi	0/7 kg/cm <sup>2</sup>	- 30inHg/15	- 1 /1 kg/cm <sup>2</sup>
0/150 psi	0/10 kg/cm <sup>2</sup>	- 30inHg /30	- 1 /2 kg/cm <sup>2</sup>
0/200 psi	0/14 kg/cm <sup>2</sup>	- 30inHg /60	- 1 /3 kg/cm <sup>2</sup>
0/300 psi	0/21 kg/cm <sup>2</sup>	- 30inHg /1 00	- 1 /6 kg/cm <sup>2</sup>
0/400 psi	0/28 kg/cm <sup>2</sup>	- 30inHg /1 50	- 1 /9 kg/cm <sup>2</sup>
0/500 psi	0/35 kg/cm <sup>2</sup>	- 30inHg /200	- 1 /15 kg/cm <sup>2</sup>
0/600 psi	0/40 kg/cm <sup>2</sup>	- 30inHg /300	- 1 /20 kg/cm <sup>2</sup>
0/1 000 psi	0/70 kg/cm <sup>2</sup>	- 30inHg /350	- 1 /24 kg/cm <sup>2</sup>
0/1 500 psi	0/100 kg/cm <sup>2</sup>		
0/2000 psi	0/140 kg/cm <sup>2</sup>		

## HOW TO ORDER

### BASIC MODEL

#### CODE

F

#### NOMINAL SIZE

100mm

#### TYPE OF MOUNTING

4 DIRECT CENTRE BACK ENTRY

#### GAUGE CONNECTION

<b>1BM</b> 1/8" BSP(M)	<b>3NM</b> 3/8" NPT(M)
<b>1NM</b> 1/8" NPT(M)	<b>1TM</b> 1/8" BSPT(M)
<b>2BM</b> 1/4" BSP(M) STANDARD	<b>2TM</b> 1/4" BSPT(M)
<b>2NM</b> 1/4" NPT(M) STANDARD	<b>3TM</b> 3/8" BSPT(M)
<b>3BM</b> 3/8" BSP(M)	

Note : Connections like PT/PF/Flaired /UNF/G/R etc.can be provided on request.

Non standard connections can be provided through adaptors.

#### RANGE

REFER TABLES

#### OPTIONS

FOR NON STANDARD PRODUCTS/OPTIONAL ITEMS, PLEASE CONTACT FACTORY FOR DELIVERY AND MINIMUM QUANTITY OF ORDER.

<b>RH</b> CUSTOM DESIGNED DIAL	<b>SX</b> SS TAG PLATE
<b>SG</b> OXYGEN SERVICE (WITHOUT DAMPENING LIQUIDS)	<b>TB</b> HELIUM LEAK TEST
<b>PW</b> FIVE POINT CALIBRATION CERTIFICATE	<b>QB</b> INTEGRAL DAMPENING SCREW IN AISI 316 SS

#### Ordering Example:

**BC - F - 4 - 2NM - 0/10kg/cm<sup>2</sup> - RH**

Note : ● Due to continuous improvement, the specification may vary from time to time.

BC

F

4

2NM

0-10  
kg/cm<sup>2</sup>

RH