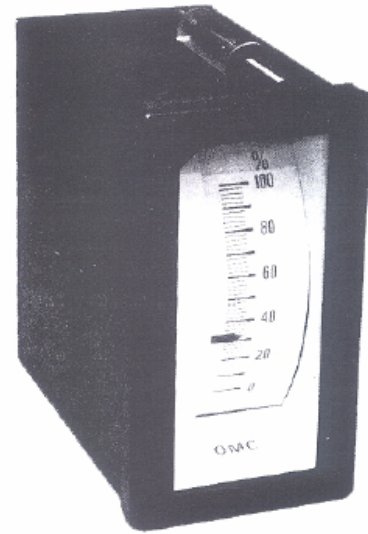


APPLICATION

The indicators DIN 192 is suitable for panel mounting.
It is available for the measures of:

- Low pressure and vacuum
- Pressure
- Temperature
- 3÷15 psi receiver
- Flow



AVAILABLE MODELS

MODEL	DESCRIPTION
192 O	reading scale, horizontal (100 mm width)
192 V	reading scale, vertical (100 mm width)

STANDARD SCALES

PRESSURE				TEMPERATURE	RECEIVER
mmH ₂ O	mH ₂ O	bar	mmHg	°C	%
-50 ÷ 50	0 ÷ 1	0 ÷ 1	0 ÷ 100	-10 ÷ 40	0 ÷ 100
-125 ÷ 125	0 ÷ 1,6	0 ÷ 1,6	0 ÷ 250	0 ÷ 100	
-250 ÷ 250	0 ÷ 2,5	0 ÷ 2,5	0 ÷ 500	50 ÷ 150	
0 ÷ 100	0 ÷ 4	0 ÷ 4	0 ÷ 760	0 ÷ 200	
0 ÷ 250	0 ÷ 6	0 ÷ 6		50 ÷ 350	
0 ÷ 500	0 ÷ 10	0 ÷ 10		0 ÷ 400	
0 ÷ 750	0 ÷ 16	0 ÷ 16			
0 ÷ 1000		0 ÷ 25			
		0 ÷ 40			

Other scales available on request



The products are Manufactured under ISO-9001 Quality Assurance System,
approved by Lloyd's Register, certificate under nr. 160050

MEASURING ELEMENT AND STANDARD CONNECTIONS

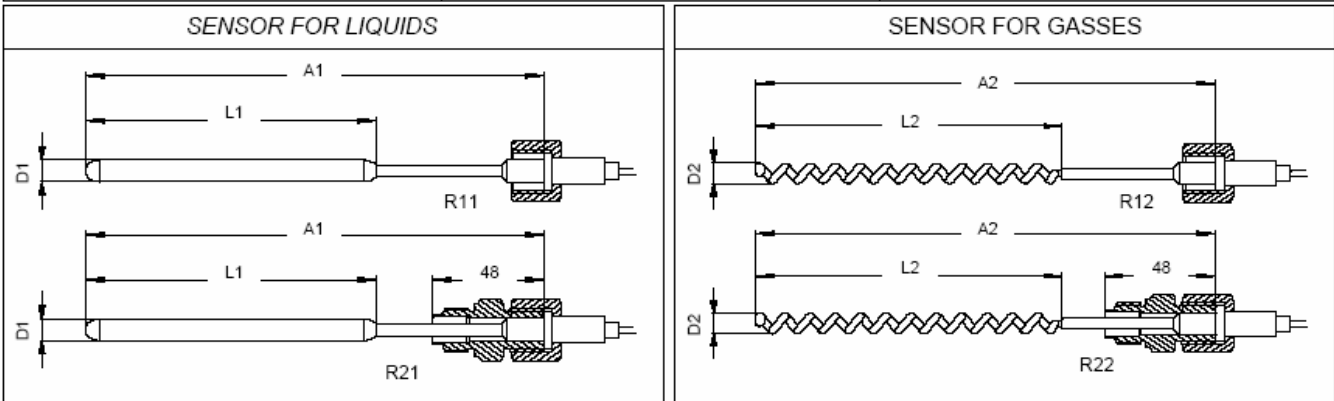
TEMPERATURE

Temperature-sensing nitrogen-filled, 2 mt. capillary length, conn. 3/4" GAS, bulb for liquids, material: S.S. ASTM A240 Type 316L
 The bulb must be completely immersed in the fluid. If the thermowell is required, fill the interspace of the bulb with graphite oil or glycerin.

Temperature-sensing nitrogen-filled, 2 mt. capillary length, conn. 3/4" GAS, bulb for gasses , material: S.S. ASTM A240 Type 316L
 The bulb must be completely immersed in the fluid.

Special connections

3/4"GAS-M	1/2"GAS-F	
1/2"GAS-M	1/2"NPT-M	



SPAN	25 °C	30 °C	40 °C	50 °C	60 °C	70 °C	80 °C	100°C	120°C	130°C	150°C	200°C	250°C	300°C	400°C	500°C
A1	250	250	250	200	200	200	200	200	200	200	200	200	200	200	200	200
L1	170	170	170	120	120	120	120	120	120	120	120	200	120	120	120	120
D1	13	13	13	13	13	13	13	13	13	13	13	13	13	13	13	13
A2	250	250	250	200	200	200	200	200	200	200	200	200	200	200	200	200
L2	170	170	170	130	130	120	120	120	120	120	120	120	120	120	120	120
D2	16	16	16	16	16	14	14	14	14	14	14	14	14	14	14	14
B1	225	225	225	175	175	175	175	175	175	175	175	175	175	175	175	175

PRESSURE

Manometric, Bourdon Tube, conn. 1/2" BSP-M, material: S.S. ASTM A312 Type 316L

LOW PRESSURE

Manometric (low pressure), tombak bellows, conn. 1/8" NPT-F with fittings for 4mm pipe size

Manometric (low pressure), S.S. ASTM A240 Type 316L bellows, conn. 1/8" NPT-F with fittings for 4mm pipe size

RECEIVER

3=15 psi Receiver , Tombak bellows, conn. 1/8" NPT-F with fittings for 4mm pipe size

TECHNICAL DATA

Degree of protection	IP54
Mounting	Panel
Accuracy	≤ 1%
Permissible ambient temperature	-15...+ 70 °C
Hysteresis	≤ 0,5%
Non linearity	≤ 0,5%
Repeatability	≤ 0,5%

DIMENSIONS

