



**Model: PDPT61, 62;
flange type for level differential pressure.**

The pneumatic type transmitters executed with a combination of vector balance mechanism and in volute mechanism.

The pneumatic transmitters are featured by high resistance against adverse environments, high turn-down ratio, high accuracy, and simple maintenance.

Description	Technical specifications		
Adjustable range	PDPT61: 0-2.500 to 0-50.000 mmH ₂ O PDPT62: 0-250 to 0-5.500 mmH ₂ O		
Process connection (DIN flange connection on request)	High pressure side	Flange connection	
	Flush diaphragm side	80 mm – JIS 10K, 30K RF or equivalent 3" – ANSI 150, 300 RF or equivalent	
	Extended diaphragm side	100 mm – JIS 10K, 30K RF or equivalent 4" – ANSI 150, 300 RF or equivalent	
	Low pressure side	Rc1/2" or 1/2" NPT.F	
Air supply connection	Rc1/4" or 1/4" NPT.F		
Air supply pressure	1,4 ±0,14 bar		
Output	0,2-1 bar or 3-15 psi		
External load	ID 4 mm x length 3 m +20 cm ³ or more		
Air supply capacity	20 NI/minute or more, with 50 mmHG change		
Air consumption	5 NI/minute or less (when balanced at output 100%)		
Accuracy	PDPT61	±0,5% FS (for spans 0-5.000 to 0-50.000 mmH ₂ O)	
		±1,0% FS (for spans 0-2.500 to 0-less than 5.000 mmH ₂ O)	
	PDPT62	±0,5% FS (for spans 0-5.000 to 0-5.500 mmH ₂ O)	
		±1,0% FS (for spans 0-2.500 to 0-less than 500 mmH ₂ O)	
Dead band	0,1% FS		
Working pressure	-0,5bar to maximum flange rating pressure (differs by material cover)		
Operating temperature	Body (primary part) -40 to +120°C, process fluid		
	Transmitter (secondary part) -30 to +80°C, ambient		
Operating humidity	10 to 90% RH		
Overload protection	Up to maximum flange rating pressure in either direction		
Construction	Dustproof and waterproof, meets; IEC IP54, NEMA Type 3R, JIS F8001 Class 3 splash proof, JIS C0920 rainproof		
Materials	Center body	304SS	
	Wetted parts of center body	316SS, 316L, Monel, Tantalum	
	Body cover	Reference side	CS, 316SS, Monel, PVC (reinforced with 304SS plates, working pressure range -0,1 to 15 bar, operating temperature 0 to 55°C)
		Measuring side	CS, 304 SS
	Wetted part gasket	Teflon	
	Transmitter case	Aluminium alloy	
Finish	Acryl baking finish colour light beige (MUNSELL 4Y7.2/1.3)		
Mounting	Directly flange mounting to process flange		
Net weight	Approx. 13 kg (+0,8 kg for air set)		

Optional specifications

(1) elevation and (2) suppression	<u>Model nr.</u>	<u>Span</u>	<u>Elevation (max)</u>	<u>Suppression (max)</u>
	PDPT61	2.500-50.000	47.500	50.000
	PDPT62	250-5.500	5.250	5.500
	Units in mmH ₂ O			
Elevation + span ≤ max. span, suppression ≤ max. span				
(3) filter pressure regulator	Adjustable output		2-9,9 bar	
	Supply		1,4 bar	
	Filter mesh		5 microns	
	Connections		Rc¼" or ¼" NPT.F	

Ordering procedure

Basic model nr.	Cover mat'l		Wetted parts mat'l		Fling. rating	Extension length	LP Conn.	Out-put	Opt.	Descriptions *in mmH ₂ O
	HP	LP	HP	LP						
PDPT61	---	---	----	----	-----	-----	-----	-----	-----	0-2.500 to 0-50.000*
PDPT62	---	---	----	----	-----	-----	-----	-----	-----	0-250 to 0-5.500*
	-1	---	----	----	-----	-----	-----	-----	-----	CS (SF45A)
	-7	---	----	----	-----	-----	-----	-----	-----	304 SS
		1	----	----	-----	-----	-----	-----	-----	CS (SF45A)
		2	----	----	-----	-----	-----	-----	-----	316 SS
		3	----	----	-----	-----	-----	-----	-----	MONEL
		5	----	----	-----	-----	-----	-----	-----	PVC
			2	----	-----	-----	-----	-----	-----	316 SS, 316LSS
			3	----	-----	-----	-----	-----	-----	MONEL (excluding extended diaphr.)
			4	----	-----	-----	-----	-----	-----	Tantalum (excluding extended diaphr.)
			6	----	-----	-----	-----	-----	-----	316L SS
			2	----	-----	-----	-----	-----	-----	316 SS, 316LSS
			3	----	-----	-----	-----	-----	-----	MONEL
			4	----	-----	-----	-----	-----	-----	Tantalum
			6	----	-----	-----	-----	-----	-----	316L SS
				1	-----	-----	-----	-----	-----	80mm JIS 10K RF flng.
				2	-----	-----	-----	-----	-----	80mm JIS 30K RF flng.
				3	-----	-----	-----	-----	-----	3" AISI 150 RF flng.
				4	-----	-----	-----	-----	-----	3" AISI 300 RF flng.
				5	-----	-----	-----	-----	-----	100mm JIS 10K RF flng.
				6	-----	-----	-----	-----	-----	100mm JIS 30K RF flng.
				7	-----	-----	-----	-----	-----	4" AISI 150 RF flng.
				8	-----	-----	-----	-----	-----	4" AISI 300 RF flng.
					00	-----	-----	-----	-----	Flush diaphragm
					10	-----	-----	-----	-----	100 mm extended
					15	-----	-----	-----	-----	150 mm extended
						A	-----	-----	-----	Rc¼" female
						B	-----	-----	-----	¼" NPT female
							1	-----	-----	0,2-1 bar
							2	-----	-----	3-15 psi
								-X	-----	No option
								-1	-----	Elevation
								-2	-----	Suppression
								-3	-----	Air-set

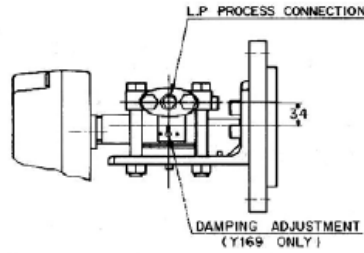
Dimensions

(Unit: mm)

Flush Diaphragm Type

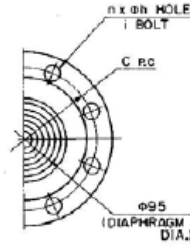
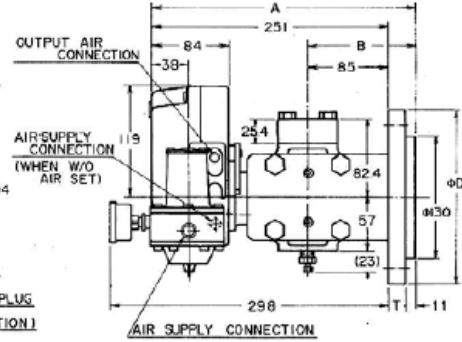
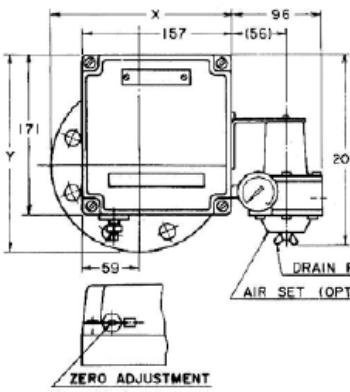
Main Dimensions

ITEM	FLANGE RATING	A	B	X	Y
1	80 mm JIS 10K RF	280	114	190.5	211.5
2	80 mm JIS 30K RF	290	124	203	224
3, A	3" ANSI/JPI 150 RF	286	120	193.5	214.5
4, B	3" ANSI/JPI 300 RF	291	125	203	224



Flange Dimensions

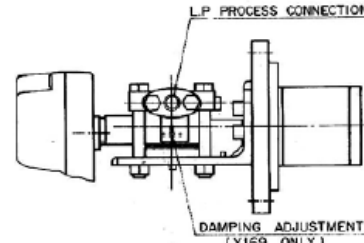
ITEM	FLANGE RATING	D	T	C	n	h	i BOLT
1	80 mm JIS 10K RF	185	18	150	8	19	M16
2	80 mm JIS 30K RF	210	28	170	8	23	M20
3	3" ANSI 150 RF	191	24	152.4	4	19	5/8
4	3" ANSI 300 RF	210	29	168.3	8	22	3/4
A	3" JPI 150 RF	191	24	152.4	4	19	5/8
B	3" JPI 300 RF	210	29	168.3	8	22	3/4



Extended Diaphragm Type

Main Dimensions

ITEM	FLANGE RATING	A	B	X	Y
5	100 mm JIS 10K RF	280	114	203	224
6	100 mm JIS 30K RF	294	128	218	239
7, C	4" ANSI/JPI 150 RF	286	120	212.5	233.5
8, D	4" ANSI/JPI 300 RF	294	128	225	246



Flange Dimensions

ITEM	FLANGE RATING	D	T	C	n	h	i BOLT
5	100 mm JIS 10K RF	210	18	175	8	19	M16
6	100 mm JIS 30K RF	240	32	195	8	25	M22
7	4" ANSI 150 RF	229	24	190.5	8	19	5/8
8	4" ANSI 300 RF	254	32	200	8	22	3/4
C	4" JPI 150 RF	229	24	190.5	8	19	5/8
D	4" JPI 300 RF	254	32	200	8	22	3/4

