



**Model: PDPT71, 72;
remote seal type for differential pressure.**

The pneumatic type transmitters executed with a combination of vector balance mechanism and in volute mechanism.

The pneumatic transmitters are featured by high resistance against adverse environments, high turn-down ratio, high accuracy, and simple maintenance.

Description	Technical specifications	
Adjustable range	PDPT71: 0-2.500 to 0-50.000 mmH ₂ O PDPT72: 0-250 to 0-5.500 mmH ₂ O	
Process connection (DIN flange connection on request)	High, low pressure side	Flange connection
	Flush diaphragm side	80 mm – JIS 10K, 30K RF or equivalent
		3" – ANSI 150, 300 RF or equivalent
	Extended diaphragm side	100 mm – JIS 10K, 30K RF or equivalent
4" – ANSI 150, 300 RF or equivalent		
Capillary tube length	2, 3, or 5 meter	
Sp. Gr. Of liquid	0,935 at 25°C	
Air supply connection	Rc¼" or ¼" NPT.F	
Air supply pressure	1,4 ±0,14 bar	
Output	0,2-1 bar or 3-15 psi	
External load	ID 4 mm x length 3 m +20 cm ³ or more	
Air supply capacity	20 NI/minute or more, with 50 mmHG change	
Air consumption	5 NI/minute or less (when balanced at output 100%)	
Accuracy	PDPT71	±0,5% FS (for spans 0-5.000 to 0-50.000 mmH ₂ O)
		±1,0% FS (for spans 0-2.500 to 0-less than 5.000 mmH ₂ O)
	PDPT72	±0,5% FS (for spans 0-5.000 to 0-5.500 mmH ₂ O)
		±1,0% FS (for spans 0-2.500 to 0-less than 500 mmH ₂ O)
Dead band	0,1% FS	
Working pressure	-0,5bar to maximum flange rating pressure (differs by material cover)	
Operating temperature	Body (primary part) -40 to +120°C, process fluid	
	Transmitter (secondary part) -30 to +80°C, ambient	
Operating humidity	10 to 90% RH	
Overload protection	Up to maximum flange rating pressure in either direction	
Construction	Dustproof and waterproof, meets; IEC IP54, NEMA Type 3R, JIS F8001 Class 3 splash proof, JIS C0920 rainproof	
Materials	Center body	304SS
	Flange	CS, 304SS
	Wetted parts	316SS, 316L SS, Monel, Tantalum
	Capillary tube	316 SS
	Armoured tube	304 SS
	Transmitter case	Aluminium alloy
Finish	Acryl baking finish colour light beige (MUNSELL 4Y7.2/1.3)	
Mounting	On vertical or horizontal 2 inch (50 mm) pipe	
Net weight	Approx. 17,5 kg (+0,8 kg for air set)	

Optional specifications

(1) elevation and (2) suppression	<u>Model nr.</u>	<u>Span</u>	<u>Elevation (max)</u>	<u>Suppression (max)</u>
	PDPT71	2.500-50.000	47.500	50.000
	PDPT72	250-5.500	5.250	5.500
	Units in mmH ₂ O			
Elevation + span ≤ max. span, suppression ≤ max. span				
(3) filter pressure regulator	Adjustable output		2-9,9 bar	
	Supply		1,4 bar	
	Filter mesh		5 microns	
	Connections		Rc¼" or ¼" NPT.F	

Ordering procedure

Basic model nr.	Cover mat'l		Wetted parts mat'l		Flg.	Cap.	Extension length	LP Conn.	Out-put	Opt.	Descriptions * in mmH ₂ O
	HP	LP	HP	LP							
PDPT71	---	---	---	---	----	----	----	----	----	----	0-2.500 to 0-50.000*
PDPT72	---	---	---	---	----	----	----	----	----	----	0-250 to 0-5.500*
	-1	---	---	---	----	----	----	----	----	----	CS (SF45A)
	-7	---	---	---	----	----	----	----	----	----	304 SS
		-1	---	---	----	----	----	----	----	----	CS (SF45A)
		-7	---	---	----	----	----	----	----	----	304 SS
			2	---	----	----	----	----	----	----	316 SS, 316LSS
			3	---	----	----	----	----	----	----	MONEL (excluding extended diaphr.)
			4	---	----	----	----	----	----	----	Tantalum (excluding extended diaphr.)
			6	---	----	----	----	----	----	----	316L SS
			2	---	----	----	----	----	----	----	316 SS, 316LSS
			3	---	----	----	----	----	----	----	MONEL (excluding extended diaphr.)
			4	---	----	----	----	----	----	----	Tantalum (excluding extended diaphr.)
			6	---	----	----	----	----	----	----	316L SS
				1	----	----	----	----	----	----	80mm JIS 10K RF flng.
				2	----	----	----	----	----	----	80mm JIS 30K RF flng
				3	----	----	----	----	----	----	3" AISI 150 RF flng.
				4	----	----	----	----	----	----	3" AISI 300 RF flng.
				5	----	----	----	----	----	----	100mm JIS 10K RF flng.
				6	----	----	----	----	----	----	100mm JIS 30K RF flng
				7	----	----	----	----	----	----	4" AISI 150 RF flng.
				8	----	----	----	----	----	----	4" AISI 300 RF flng.
					02	----	----	----	----	----	2 meter capillary length
					03	----	----	----	----	----	3 meter capillary length
					05	----	----	----	----	----	5 meter capillary length
						00	----	----	----	----	Flush diaphragm
						10	----	----	----	----	100 mm extended
						15	----	----	----	----	150 mm extended
							A	----	----	----	Rc¼" female
							B	----	----	----	¼" NPT female
								1	----	----	0,2-1 bar
								2	----	----	3-15 psi
									-X	----	No option
									-1	----	Elevation
									-2	----	Suppression
									-3	----	Air-set

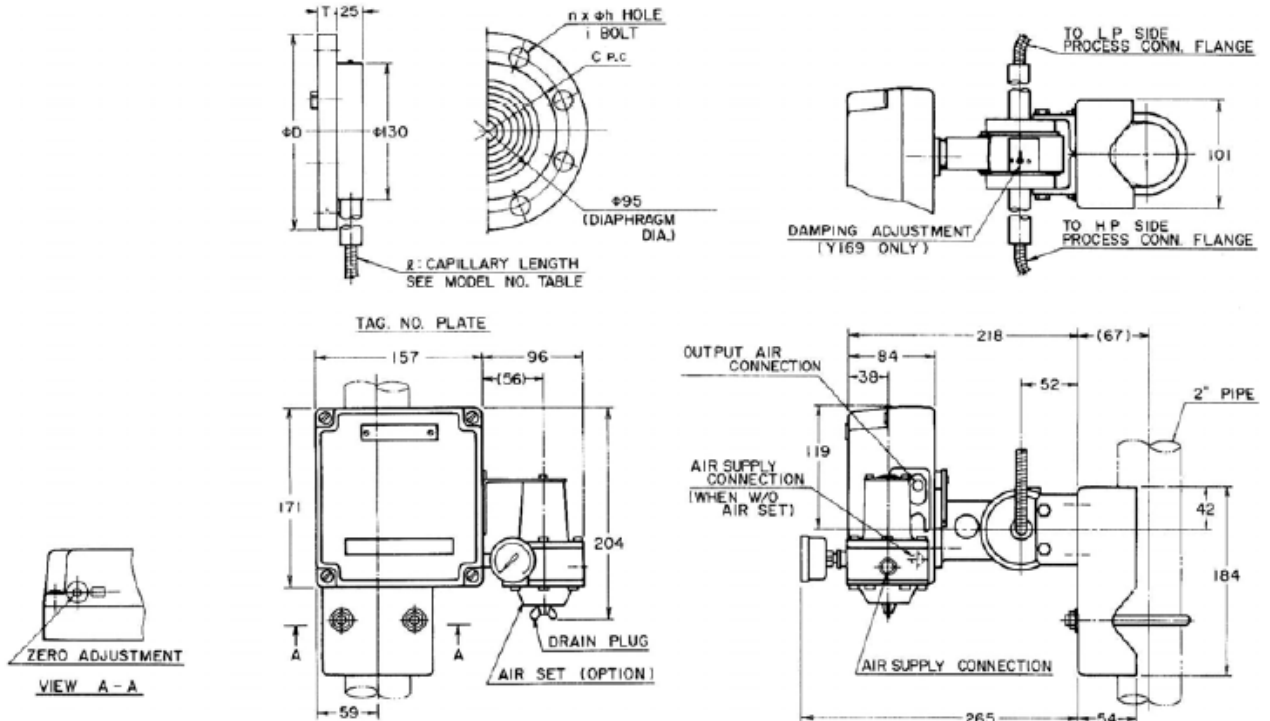
Dimensions

(Unit: mm)

Flush Diaphragm Type

Flange Dimensions

ITEM	FLANGE RATING	D	T	C	n	h	1 BOLT
1	80 mm JIS 10K RF	185	18	150	8	19	M16
2	80 mm JIS 30K RF	210	28	170	8	23	M20
3	3" ANSI 150 RF	191	24	152.4	4	19	5/8
4	3" ANSI 300 RF	210	29	168.3	8	22	3/4
A	3" JPI 150 RF	191	24	152.4	4	19	5/8
B	3" JPI 300 RF	210	29	168.3	8	22	3/4



Extended Diaphragm Type

Flange Dimensions

ITEM	FLANGE RATING	D	T	C	n	h	1 BOLT
5	100 mm JIS 10K RF	210	18	175	8	19	M18
6	100 mm JIS 30K RF	240	32	195	8	25	M22
7	4" ANSI 150 RF	229	24	190.5	8	19	5/8
B	4" ANSI 300 RF	254	32	200	8	22	3/4
C	4" JPI 150 RF	229	24	190.5	8	19	5/8
D	4" JPI 300 RF	254	32	200	8	22	3/4

