



Model: PPT11, 12, 13, 14;
standard type for high or medium gauge pressure.

The pneumatic type transmitters executed with a combination of vector balance mechanism and in volute mechanism.

The pneumatic transmitters are featured by high resistance against adverse environments, high turn-down ratio, high accuracy, and simple maintenance.

Description	Technical specifications					
Adjustable range	PPT11: 0-50 to 0-700 bar					
	PPT12: 0-12,5 to 0-250 bar					
	PPT13: 0-3,5 to 0-70 bar					
	PPT14: 0-1,75 to 0-35 bar					
Working pressure, overload protection, process connection	<u>Model nr.</u>	<u>Working press.</u>	<u>Overload protect.</u>	<u>Process connect.</u>		
	PPT11	-1 to +700 bar	750 bar	Welded nipple(Ø13,6x50)		
	PPT12	-1 to +300 bar	320 bar	Rc½" or ¼" female ½" or ¼" NPT female		
	PPT13	-1 to +105 bar	140 bar			
PPT14	-1 to +52,5 bar	70 bar				
Air supply connection	Rc¼" or ¼" NPT.F					
Air supply pressure	1,4 ±0,14 bar					
Output	0,2-1 bar or 3-15 psi					
External load	ID 4 mm x length 3 m +20 cm ³ or more					
Air supply capacity	20 NI/minute or more, with 50 mmHG change					
Air consumption	5 NI/minute or less (when balanced at output 100%)					
Accuracy, dead band	<u>Model</u>	<u>Span (bar)</u>		<u>Accuracy (%FS)</u>		<u>Deadband (%FS)</u>
	PPT11	50 to <100	≥100	±1	±0,5	0,1
	PPT12	12,5 to <25	≥25	±1	±0,5	0,1
	PPT13	3,5 to <7	≥7	±1	±0,5	0,1
PPT14	1,75 to <3,5	≥3,5	±1	±0,5	0,1	
Operating temperature	Body (primary part) -40 to +120°C, process fluid					
	Transmitter (secondary part)-30 to +80°C, ambient					
Operating humidity	10 to 90% RH					
Construction	Dustproof and waterproof, meets; IEC IP54, NEMA Type 3R, JIS F8001 Class 3 splash proof, JIS C0920 rainproof					
Materials	Bellows		316SS			
	Wetted parts gasket		Teflon			
	Body cover		316 SS			
	Wetted part gasket		Teflon			
Transmitter case		Aluminium alloy				
Finish	Acryl baking finish colour light beige (MUNSELL 4Y7.2/1.3)					
Mounting	On vertical or horizontal 2 inch (50 mm) pipe					
Net weight	Approx. 5,5 kg (+0,8 kg for air set)					

Optional specifications

	<u>Model nr.</u>	<u>Span</u>	<u>Spring A</u>	<u>Spring B</u>	<u>Suppression (max)</u>	<u>Working Pressure (max.)</u>
			<u>Elevation (max)</u>	<u>High elevation</u>		
(1) elevation and (2) suppression	PPT11	50-700	650	-	-1	700
	PPT12	12,5-250	225	225-287,5		300
	PPT13	3,55-70	60	60-101,5		105
	PPT14	1,75-35	30	30-50,75		52,5
	Units in bar					
Elevation + span ≤ max. operating pressure						
(3) filter pressure regulator	Adjustable output		2-9,9 bar			
	Supply		1,4 bar			
	Filter mesh		5 microns			
	Connections		Rc¼" or ¼" NPT.F			

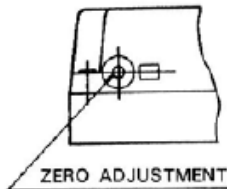
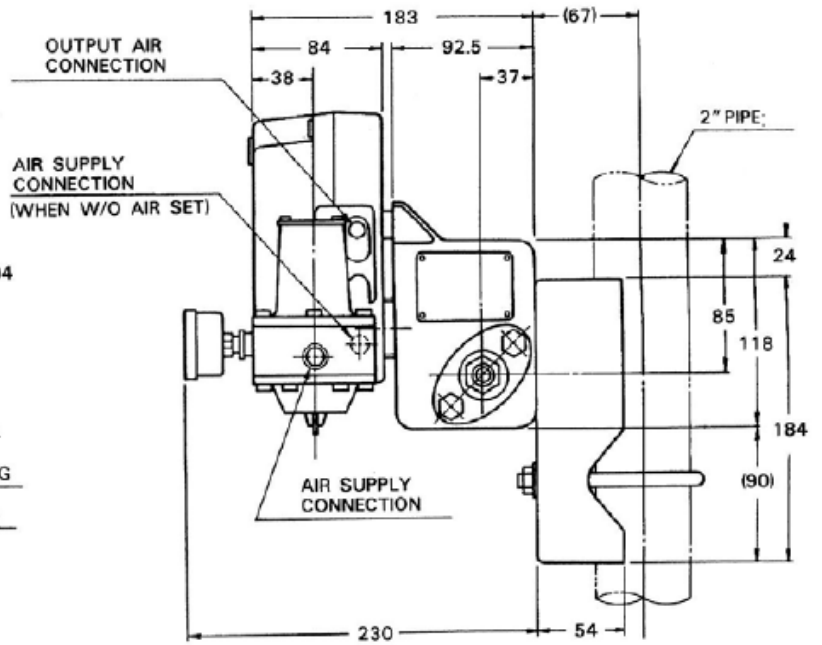
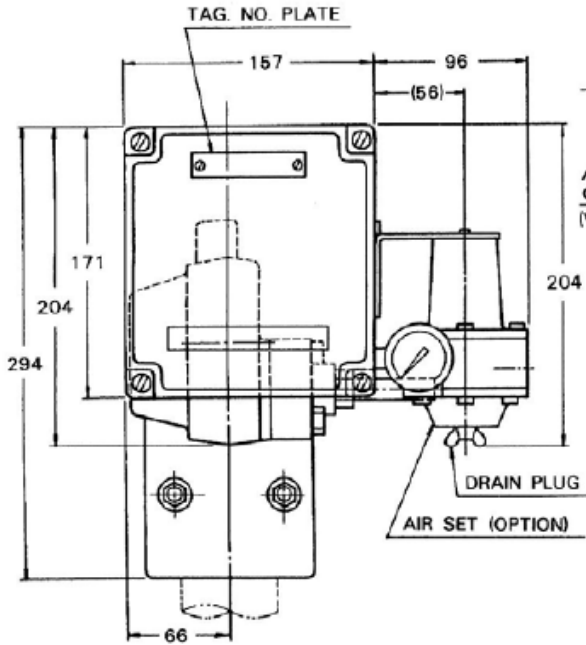
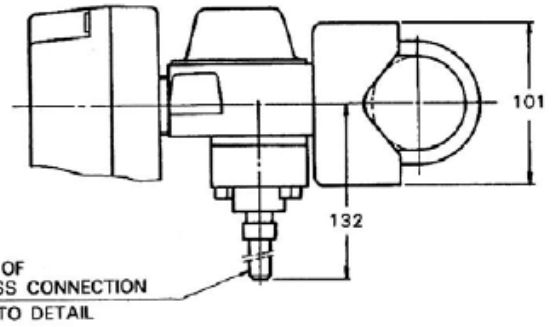
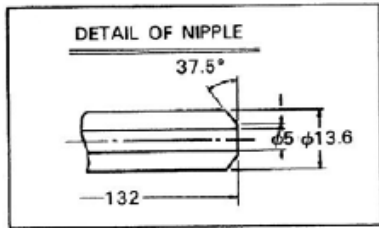
Ordering procedure

Basic model nr.	Cover mat'l	Bellows mat'l	Process conn.	Output	Option	Descriptions
	HP	HP				
PPT11	-----	-----	-----	-----	-----	0-50 to 0-700 bar
PPT12	-----	-----	-----	-----	-----	0-12,5 to 0-250 bar
PPT13	-----	-----	-----	-----	-----	0-3,5 to 0-70 bar
PPT14	-----	-----	-----	-----	-----	0-1,75 to 0-35 bar
	-2	-----	-----	-----	-----	316 SS
		2	-----	-----	-----	316 SS
			A	-----	-----	Rc¼" internal thread
			B	-----	-----	¼" NPT internal thread
				1	-----	0,2-1 bar
				2	-----	3-15 psi
					-X	No option
					-1	Elevation
					-2	Suppression
					-3	Air-set

Dimensions

(Unit: mm)

MODEL: KKP11



MODEL: KKP12/13/14

