



**Model: PPT15, 16, 17, 18;
standard type for low gauge pressure.**

The pneumatic type transmitters executed with a combination of vector balance mechanism and in volute mechanism.

The pneumatic transmitters are featured by high resistance against adverse environments, high turn-down ratio, high accuracy, and simple maintenance.

Description	Technical specifications					
Adjustable range	PPT15: 0-0,35 to 0-7 bar					
	PPT16: 0-0,1 to 0-2 bar					
	PPT17: 0-25 to 0-500 mmHG					
	PPT18: 0-5 to 0-100 mmHG					
Working pressure, overload protection, process connection	<u>Model</u>	<u>Working press.</u>	<u>Overload protect.</u>		<u>Process connect.</u>	
	PPT15	-1 to +10,5 bar	14 bar		Rc½" or ¼" female ½" or ¼" NPT female	
	PPT16	-1 to +3 bar	4 bar			
	PPT17	-500 to +500 mmHG	4 bar			
PPT18	-100 to +100 mmHG	4 bar				
Air supply connection	Rc¼" or ¼" NPT.F					
Air supply pressure	1,4 ±0,14 bar					
Output	0,2-1 bar or 3-15 psi					
External load	ID 4 mm x length 3 m +20 cm ³ or more					
Air supply capacity	20 NI/minute or more, with 50 mmHG change					
Air consumption	5 NI/minute or less (when balanced at output 100%)					
Accuracy, dead band	<u>Model</u>	<u>Span</u>		<u>Accuracy (%FS)</u>		<u>Deadband (%FS)</u>
	PPT15	0,35 to <0,7 bar	≥0,7	±1	±0,5	0,1
	PPT16	0,1 to <0,2 bar	≥0,2	±1	±0,5	0,1
	PPT18	5 to <10 mmHG	≥10	±1	±0,5	0,1
		10 to <70 mmHG	≥70	±0,5	±0,75	0,1
Operating temperature	Body (primary part) -40 to +120°C, process fluid					
	Transmitter (secondary part) -30 to +80°C, ambient					
Operating humidity	10 to 90% RH					
Construction	Dustproof and waterproof, meets; IEC IP54, NEMA Type 3R, JIS F8001 Class 3 splash proof, JIS C0920 rainproof					
Materials	Bellows			316SS		
	Wetted parts gasket			Teflon		
	Body cover			316 SS		
	Wetted part gasket			Teflon		
	Transmitter case			Aluminium alloy		
Finish	Acryl baking finish colour light beige (MUNSELL 4Y7.2/1.3)					
Mounting	On vertical or horizontal 2 inch (50 mm) pipe					
Net weight	PPT15/16 approx. 5,5 kg (+0,8 kg for air set)					
	PPT17/18 approx. 8 kg (+0,8 kg for air set)					

Optional specifications

	Model nr.	Span	Spring A	Spring B	Suppression (max)	Working Pressure (max.)
			Elevation (max)	High elevation		
(1) elevation and (2) suppression	PPT15	0,35 - 7	6	6 – 10,15	-1	10,5
	PPT16	0,1 - 2	1,8	1,8 – 2,9		3
	PPT17	25 - 500	475	-	-500	500
	PPT18	5 - 100	95	-	-100	100
	PPT15/16 units in bar, PPT17/18 units in mmHG					
Elevation + span ≤ max. operating pressure						
(3) filter pressure regulator	Adjustable output		2-9,9 bar			
	Supply		1,4 bar			
	Filter mesh		5 microns			
	Connections		Rc¼" or ¼" NPT.F			

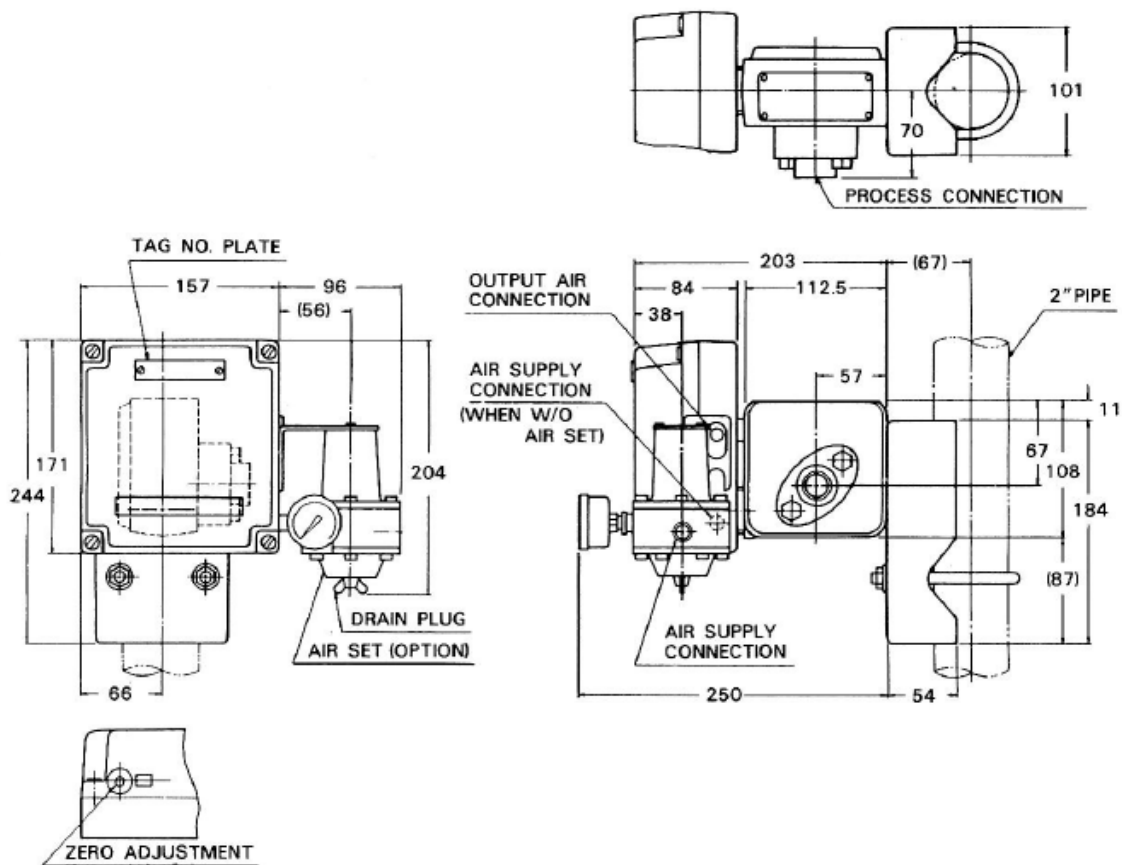
Ordering procedure

Basic model nr.	Cover mat'l	Bellows mat'l	Process conn.	Output	Option	Descriptions
	HP	HP				
PPT15	-----	-----	-----	-----	-----	0-0,35 to 0-7 bar
PPT16	-----	-----	-----	-----	-----	0-0,1 to 0-2 bar
PPT17	-----	-----	-----	-----	-----	0-25 to 0-500 mmHG
PPT18	-----	-----	-----	-----	-----	0-5 to 0-100 mmHG
	-1	-----	-----	-----	-----	CS (SF45A) (PPT17/18 only)
	-2	-----	-----	-----	-----	316 SS
		2	-----	-----	-----	316 SS
			A	-----	-----	Rc¼" internal thread
			B	-----	-----	¼" NPT internal thread
				1	-----	0,2-1 bar
				2	-----	3-15 psi
					-X	No option
					-1	Elevation
					-2	Suppression
					-3	Air-set

Dimensions

(Unit: mm)

KKP15/16



KKP17/18

