



**Model: PPT71, 72, 73, 74, 75, 76;  
remote seal type for pressure.**

The pneumatic type transmitters executed with a combination of vector balance mechanism and in volute mechanism.

The pneumatic transmitters are featured by high resistance against adverse environments, high turn-down ratio, high accuracy, and simple maintenance.

Description	Technical specifications		
Adjustable range	PPT71: 0-50 to 0-700 bar		
	PPT72: 0-12,5 to 0-250 bar		
	PPT73: 0-3,5 to 0-70 bar		
	PPT74: 0-1,75 to 0-35 bar		
	PPT75: 0-0,35 to 0-7 bar		
	PPT76: 0-0,1 to 0-2 bar		
Working pressure, overload protection, process connection	<u>Model</u>	<u>Working press. (up to 120°C)</u>	<u>Overload protect.</u>
			<u>up to 120°C</u>   <u>normal temp.</u>
	PPT71	-1 to +700 bar	750 bar
	PPT72	-1 to +300 bar	320 bar
	PPT73	-1 to +105 bar	140 bar
	PPT74	-1 to +52,5 bar (2" ANSI Wafer)	70 bar
		-1 to +51 bar (JIS 30K flange)	51 bar
		-1 to +37 bar (ANSI 300 flange)	37 bar   50 bar
PPT75	-0,5 to +10,5 bar	14 bar	
PPT76	-0,5 to +3 bar	4 bar	
Process connection (DIN flange connection on request)	<u>Process connection</u>		<u>Model nr.</u>
	- screw conn. G1½" (Ø34 button diaphragm)		PPT71, 72
	- 2" RF Wafer		PPT72, 73, 74
	- flush diaphragm type 80 mm JIS 10K		PPT75, 76
	- flush diaphragm type 80 mm JIS 30K		PPT74
	- flush diaphragm type 3" ANSI 150# RF		PPT75, 76
	- flush diaphragm type 3" ANSI 300# RF		PPT74
	- extended diaphragm type 80 mm JIS 10K		PPT75, 76
	- extended diaphragm type 80 mm JIS 30K		PPT74
	- extended diaphragm type 4" ANSI 150# RF		PPT75, 76
- extended diaphragm type 4" ANSI 300# RF		PPT74	
Capillary tube length	2, 3, or 5 meter		
Sp. Gr. Of liquid	0,935 at 25°C		
Air supply connection	Rc¼" or ¼" NPT.F		
Air supply pressure	1,4 ±0,14 bar		
Output	0,2-1 bar or 3-15 psi		
External load	ID 4 mm x length 3 m +20 cm <sup>3</sup> or more		
Air supply capacity	20 NI/minute or more, with 50 mmHG change		
Air consumption	5 NI/minute or less (when balanced at output 100%)		

Description	Technical specifications					
Accuracy, dead band	Model	Span (bar)		Accuracy (%FS)		Deadband (%FS)
	PPT71	50 to <100	≥100	±1	±0,5	0,1
	PPT72	12,5 to <25	≥25	±1	±0,5	0,1
	PPT73	3,5 to <7	≥7	±1	±0,5	0,1
	PPT74	1,75 to <3,5	≥3,5	±1	±0,5	0,1
	PPT75	0,35 to <0,7	≥0,7	±1	±0,5	0,1
	PPT76	0,1 to <0,2	≥0,2	±1	±0,5	0,1
Operating temperature	Body (primary part) -40 to +120°C, process fluid Transmitter (secondary part) -30 to +80°C, ambient					
Operating humidity	10 to 90% RH					
Overload protection	Up to maximum flange rating pressure in either direction					
Construction	Dustproof and waterproof, meets; IEC IP54, NEMA Type 3R, JIS F8001 Class 3 splash proof, JIS C0920 rainproof					
Materials	Center body		304SS			
	Flange		CS, 304SS			
	Wetted parts		316SS, 316L SS, Monel, Tantalum			
	Capillary tube		316 SS			
	Armoured tube		304 SS			
	Transmitter case		Aluminium alloy			
Finish	Acryl baking finish colour light beige (MUNSELL 4Y7.2/1.3)					
Mounting	On vertical or horizontal 2 inch (50 mm) pipe					
Net weight	Approx. 12,5 kg (+0,8 kg for air set)					

### Optional specifications

	Model	Span (bar)	Spring A	Spring B	Suppression (max)	Working Pressure (max.)	
			Elevation (max)	High elevation			
(1) elevation and (2) suppression	PPT71	50-700	650	-	-1	700	
	PPT72	12,5-250	225	225-287,50		300	
	PPT73	3,5-70	60	60-101,5		105	
	PPT74 (2" ANSI Wafer)	1,75-35	30	30-50,75		52,5	
	PPT74 (80, 100 mm JIS 30 K)			30-49,25	51		
	PPT74 (3", 4" ANSI 300)			30-35,25	37		
	PPT75	0,35-7	6	6-10,15	-0,5	10,5	
	PPT76	0,1-2	1,8	1,8-2,9		3	
	units in bar						
	Elevation + span ≤ max. operating pressure						
(3) filter pressure regulator	Adjustable output		2-9,9 bar				
	Supply		1,4 bar				
	Filter mesh		5 microns				
	Connections		Rc¼" or ¼" NPT.F				

## Ordering procedure

Basic model nr.	Flange or screw mat'l	Wetted parts mat'l	Flg.	Cap.	Extension length	Air Conn.	Output	Opt.	Descriptions
PPT71	-----	-----	----	----	-----	-----	----	----	0-50 to 0-700 bar
PPT72	-----	-----	----	----	-----	-----	----	----	0-12,5 to 0-250 bar
PPT73	-----	-----	----	----	-----	-----	----	----	0-3,5 to 0-70 bar
PPT74	-----	-----	----	----	-----	-----	----	----	0-1,75 to 0-35 bar
PPT75	-----	-----	----	----	-----	-----	----	----	0-0,35 to 0-7 bar
PPT76	-----	-----	----	----	-----	-----	----	----	0-0,1 to 0-2 bar
	-1	-----	----	----	-----	-----	----	----	CS (SF45A) (see note 1, 3)
	-2	-----	----	----	-----	-----	----	----	316SS (see note 1, 2)
	-7	-----	----	----	-----	-----	----	----	304 SS (see note 3)
	-8	-----	----	----	-----	-----	----	----	316L SS (see note 1)
		2	----	----	-----	-----	----	----	316 SS, 316LSS
		3	----	----	-----	-----	----	----	MONEL (see note 1, 3, 4)
		4	----	----	-----	-----	----	----	Tantalum
		6	----	----	-----	-----	----	----	316L SS
			01	----	-----	-----	----	----	80mm JIS 10K RF flng.
			02	----	-----	-----	----	----	80mm JIS 30K RF flng.
			03	----	-----	-----	----	----	3" ANSI 150 RF flng.
			04	----	-----	-----	----	----	3" ANSI 300 RF flng.
			05	----	-----	-----	----	----	100mm JIS 10K RF flng.
			06	----	-----	-----	----	----	100mm JIS 30K RF flng.
			07	----	-----	-----	----	----	4" ANSI 150 RF flng.
			08	----	-----	-----	----	----	4" ANSI 300 RF flng.
			09	----	-----	-----	----	----	2" ANSI 1500 RF Wafer
			11	----	-----	-----	----	----	G1½" male button diap.
				02	-----	-----	----	----	2 meter capillary length
				03	-----	-----	----	----	3 meter capillary length
				05	-----	-----	----	----	5 meter capillary length
					00	-----	----	----	Available for flush diaphragm, button diaphragm and wafer type
					10	-----	----	----	100mm extended diaph.
					15	-----	----	----	150mm extended diaph.
						A	----	----	Rc¼" female
						B	----	----	¼" NPT female
							1	----	0,2-1 bar
							2	----	3-15 psi
								-X	No option
								-1	Elevation
								-2	Suppression
								-3	Air-set

Note 1; (excl. button diaphragm type)

Note 2; (excl. flange type)

Note 3; (excl. wafer type)

Note 4; (excl. extended diaphragm type)

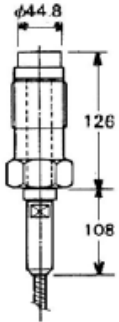
# Dimensions

(Unit: mm)

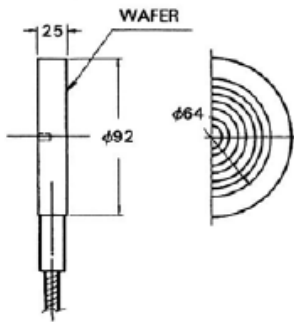
## Flange Dimensions

ITEM	FLANGE RATING		D	T	C	n	h	i BOLT
01	80 mm JIS 10 K RF		185	18	150	8	19	M16
02	80 mm JIS 30 K RF		210	28	170	8	23	M20
03, 0A	3"	ANSI/	150 RF	191	24	152.4	4	19
04, 0B		JPI	300 RF	210	29	168.3	8	22
05	100 mm JIS 10 K RF		210	18	175	8	19	M16
06	100 mm JIS 30 K RF		240	32	195	8	25	M22
07, 0C	4"	ANSI/	150 RF	229	24	190.5	8	19
08, 0D		JPI	300 RF	254	32	200	8	22

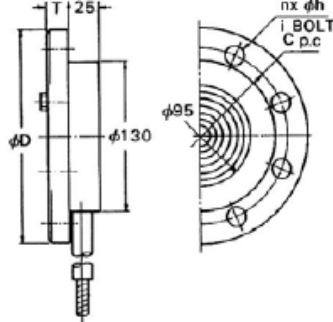
### Button Diaphragm



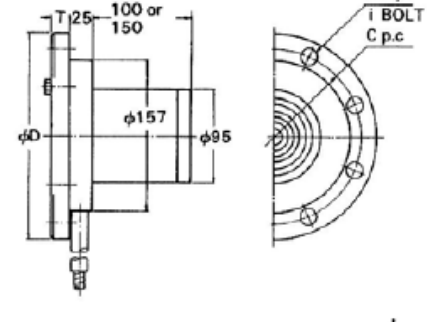
### Wafer



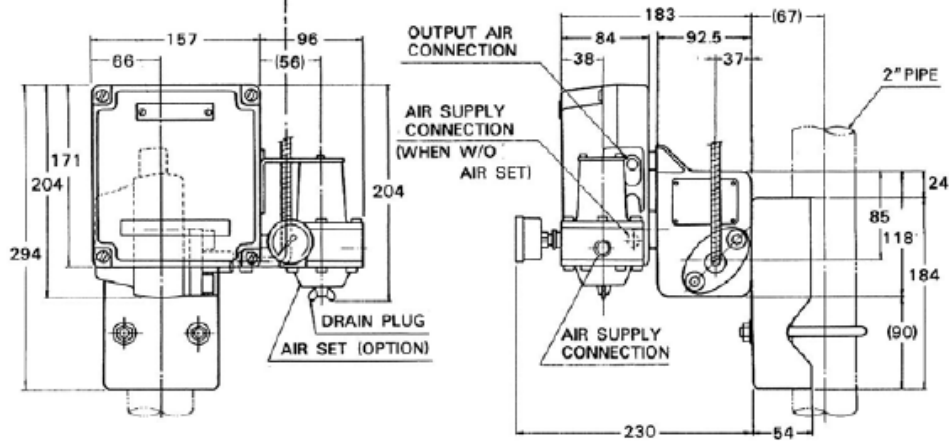
### Flush Diaphragm



### Extended Diaphragm



### KKP71/72/73/74



### KKP75/76

