



Prevents breakdowns and misalignments in pressure gauges.
 Absorbs abrupt pressure changes or water hammer which cause malfunctioning pressure gauges.
 Isolates the pressure gauge from extreme temperatures by creating thermal isolation space.
 If working with steam, ensure that the pressure gauge is activated by water condensation and not by steam.

Specifications

- Manufactured from unwelded tubing.
- Standard model bent cold.
- Pressure and temperature permitted by DIN-2401. Sheet 2.

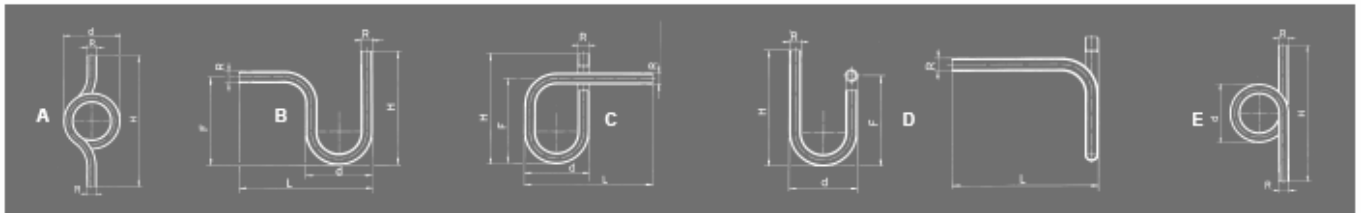
IMPORTANT

- Depending on demand:
- From B, C, D and E.
 - NPT screws, ISO metric, socket welding ends "SW", etc.
 - Alternative thicknesses and materials.
 - Complies with DIN-16282, DIN-16283 and DIN-16284.

N°. PIECE	PIECE	MATERIAL					
		CARBON STEEL			STAINLESS STEEL		
1	Siphon tube	Carbon steel (DIN-1.0308 ST-35)			Stainless steel (DIN-1.4401) (AISI-316)		
2	Sleeve	Brass (DIN-1.7660 CuZn40Pb2)			Stainless steel (DIN-1.4401) (AISI-316)		
3	Nut	Brass (DIN-1.7660 CuZn40Pb2)			Stainless steel (DIN-1.4401) (AISI-316)		
4	Gasket	Klingerit cardboard			Klingerit acidit cardboard		
DN		1/4" to 1/2"					
PN		32			40		
OPERATING CONDITIONS	PRESSURE IN bar	32	25	20	40	32	25
	MAXIMUM TEMP. IN °C	120	300 (1)	400 (1)	120	300	400
	MINIMUM TEMP. IN °C	- 10			- 60		

(1) For temperatures over 250°C only without sleeve and nut.

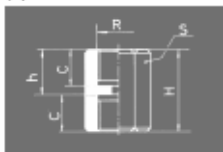
R		1/4"					3/8"					1/2"				
CONNECTIONS		Whitworth gas-tight cylindrical male thread ISO 228/1 1978 (DIN-259)														
TUBE CONSTRUCTION STANDARD	CARBON STEEL	DIN-2440 without welding														
	STAINLESS STEEL	DIN-2462 without welding														
TUBE EXTERIOR Ø	CARBON STEEL	13,80					17,20					21,30				
	STAINLESS STEEL	13,71					17,15					21,34				
TUBE INTERIOR Ø	CARBON STEEL	8,80					12,50					16,00				
	STAINLESS STEEL	9,23					12,53					15,80				
FORM		A	B	C	D	E	A	B	C	D	E	A	B	C	D	E
d		85	85	85	85	85	100	100	100	100	100	118	118	118	118	118
F		—	130	130	130	—	—	140	140	140	—	—	160	160	160	—
H		193	165	165	165	193	230	180	180	180	230	278	205	205	205	278
L		—	180	180	180	—	—	210	210	210	—	—	240	240	240	—
WEIGHT IN Kgs.	CARBON STEEL	0,28	0,26	0,31	0,31	0,27	0,43	0,38	0,45	0,45	0,42	0,72	0,62	0,74	0,74	0,71
	STAINLESS STEEL	0,27	0,26	0,30	0,30	0,26	0,43	0,38	0,45	0,45	0,41	0,76	0,66	0,78	0,78	0,75
CODE	CARBON STEEL	2201-011.7045	2201-011.70453	2201-011.70455	2201-011.70457	2201-011.70459	2201-011.7385	2201-011.73853	2201-011.73855	2201-011.73857	2201-011.73859	2201-011.7025	2201-011.70253	2201-011.70255	2201-011.70257	2201-011.70259
	STAINLESS STEEL	2201-011.8042	2201-011.80423	2201-011.80425	2201-011.80427	2201-011.80429	2201-011.8382	2201-011.83823	2201-011.83825	2201-011.83827	2201-011.83829	2201-011.8022	2201-011.80223	2201-011.80225	2201-011.80227	2201-011.80229



SLEEVE				
R	1/4"	3/8"	1/2"	
CONNECTIONS	Whitworth gas-tight cylindrical female thread ISO 228/1 1978 (DIN-259)			
C	12	15	18	
H	28	34	40	
h	16	19	22	
S	20 (1)	24	28 (2)	
WEIGHT IN Kgs.	BRASS	0,06	0,09	0,12
	S. STEEL	0,05	0,08	0,12
CODE	BRASS	2201-011.00411	2201-011.03811	2201-011.00211
	S. STEEL	2201-011.00421	2201-011.03821	2201-011.00221

NUT				
R	1/4"	3/8"	1/2"	
CONNECTIONS	Whitworth gas-tight cylindrical female thread ISO 228/1 1978 (DIN-259)			
H	BRASS	6	7	5
	S. STEEL	5	6	7
S	BRASS	20	24	28
	S. STEEL	19	24	25
WEIGHT IN Kgs.	BRASS	0,01	0,02	0,02
	S. STEEL	0,01	0,02	0,02
CODE	BRASS	2201-011.00412	2201-011.03812	2201-011.00212
	S. STEEL	2201-011.00422	2201-011.03822	2201-011.00222

The sleeves are supplied with the gasket for connection to the pressure gauge.
 (1) 19 in Stainless steel.
 (2) 27 in Stainless steel.



Informative brochure, without obligation and subject to our General Sales Conditions.